

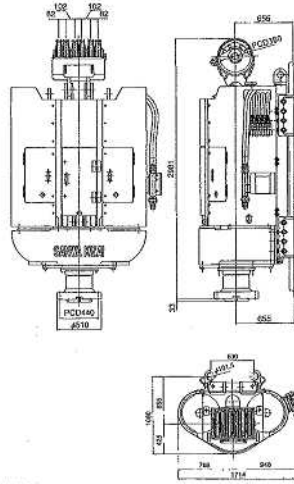
# SANWA AUGER

Sanwa Kizai Earth Auger

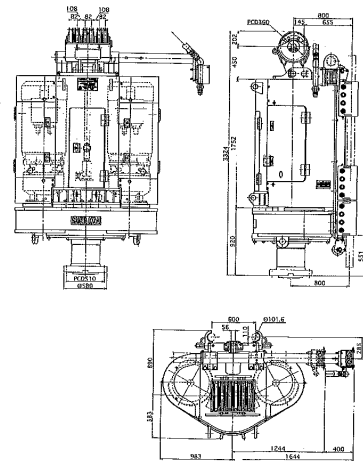


Earth Auger

ROCK AUGER  
D-150SP



ROCK AUGER  
D-240HP-E25



## General Specification of Sanwa kizai Earth Auger Series

Model		D-120KP			D-150SP		
		A2	A3	A4	A2	A3	A4
Electric Motor (kW / P)		90kW · 4/8P			55x2 kW · 4/8P		
Screw Rotation	@50Hz	27.7/13.8	32.1/16.0	40.1/20.0	25.7/12.8	29.8/14.9	37.2/18.6
	@60Hz	33.3/16.6	38.6/19.3	48.2/24.1	30.9/15.4	35.8/17.9	44.7/22.3
Rated Torque (kN-m)	@50Hz	31.0/61.9	26.7/53.4	21.4/42.8	40.79/81.58	35.19/70.39	28.23/56.46
	@60Hz	25.8/51.5	22.2/44.4	21.8/35.6	33.95/67.90	29.29/58.59	23.49/46.99
Swivel(diameter)		53(2in.)					
Mass (Ton)	Main Body	5.3	5.1	6.9	6.9	6.9	

Model		D-150HP	D-200HP	D-240HP
Electric Motor(kW/P)		55x2kW · 4/8P	75x2kW · 4/6P	90x2kW · 4/6P
Screw Rotation	@50Hz	15.9/7.9	19.5/13	19.5/13
	@60Hz	19.1/9.5	23.4/15.6	23.4/15.6
Rated Torque (kN-m)	@50Hz	65.87/131.75	73.29/109.93	87.94/131.92
	@60Hz	54.83/109.66	61/91.77	73.2/110.12
Swivel (diameter)		53(2in.)		
Mass (Ton)	Main Body	9.7	9.9	10.5

\* Please note that some products may be subject to change due to continuous studies of design and performance.

**SANWA KIZAI CO., LTD.**

Head office  
4-9, 2-Chome, Nihonbashi-kayaba Cho, Chuo-ku,  
Tokyo, Japan  
TEL (03)3667-8961 FAX (03)3666-7116  
URL <http://www.sanwakizai.co.jp>  
e-mail:sales2@sanwakizai.co.jp

090113-Y